

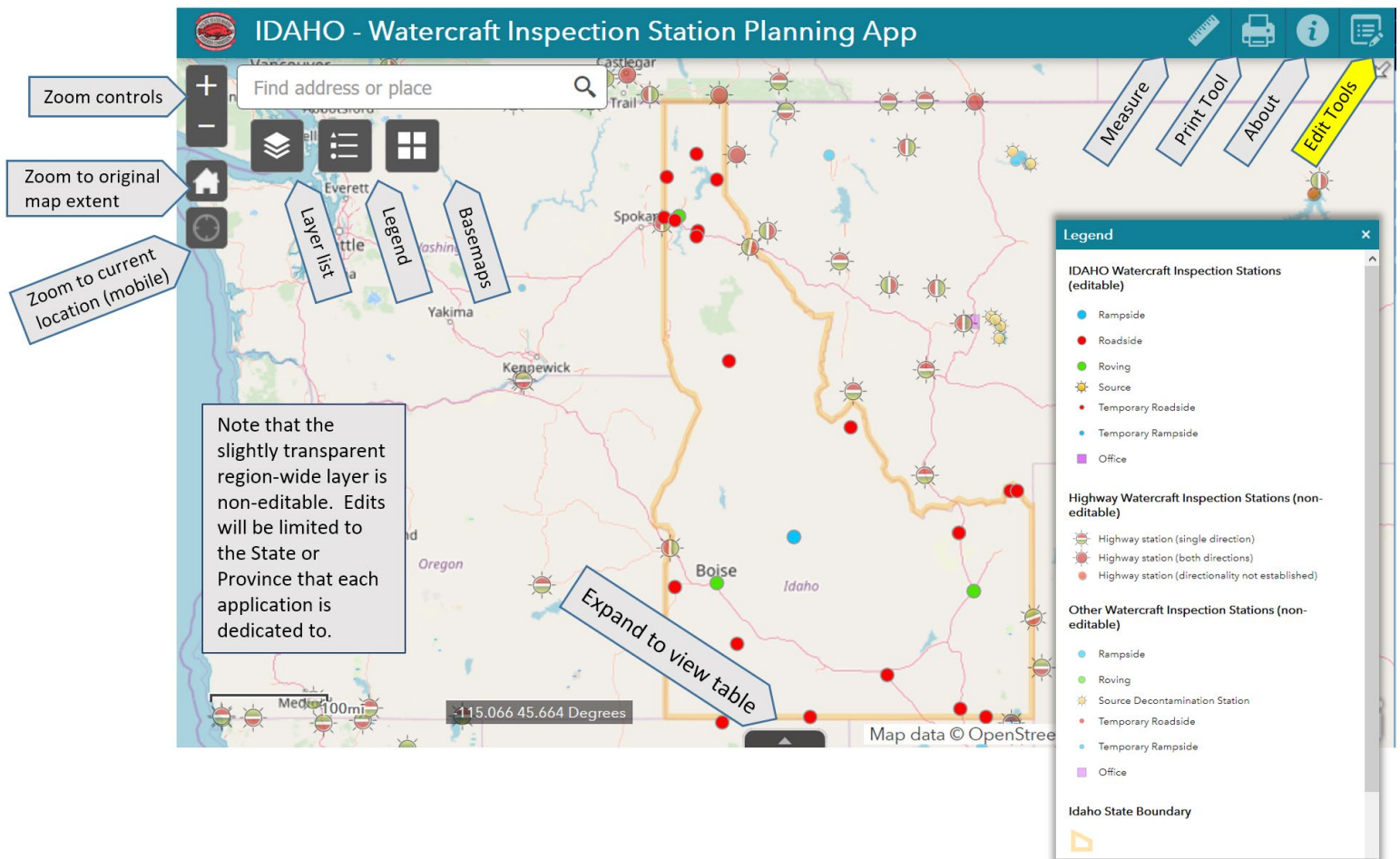
Current Season Watercraft Inspection & Decontamination (WID) Station Planning App


Purpose: Support the regional compilation and review of proposed WID station locations and hours of operation.

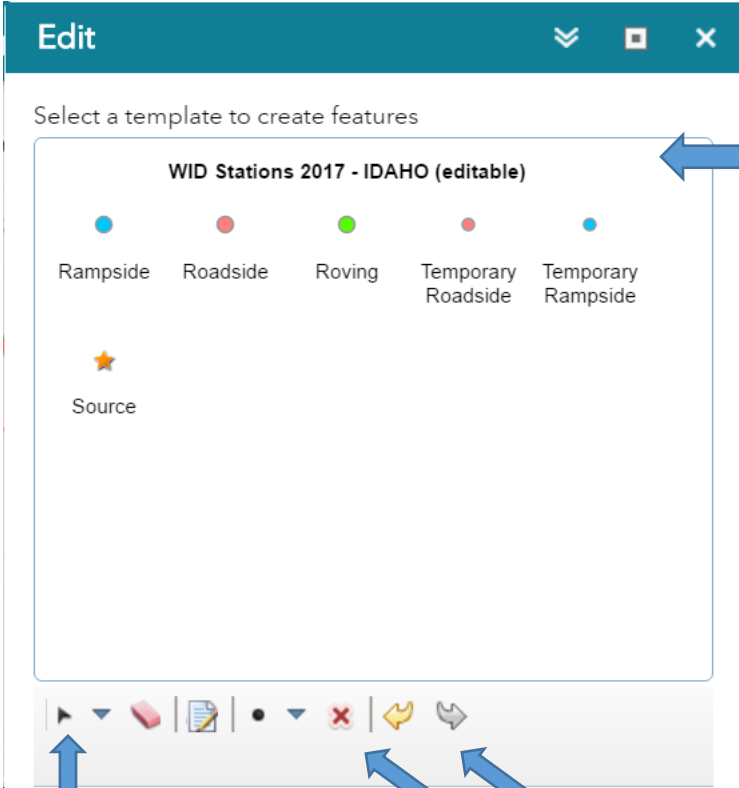
How: Each State / Province will have access to a web mapping application dedicated to the jurisdiction. This tool allows AIS Coordinators to confirm and modify information about the WID stations planned for the coming season under current funding.

Instructions:

1. Using the State/Province specific link and credentials provided, login to the web mapping application.
2. Explore the map using basic navigation tools. The interface is basic and allows panning, zooming and clicking on features to reveal attributes for mapped locations.



3. Use the Edit tool icon  to begin editing information for each station. When the below window below is displayed, you are in 'edit mode' and can edit attributes for an existing station by selecting it on the map, or add new proposed stations by using the edit template and selecting a station type. If a station that was used in a prior year will not be operational in 2020, please DO NOT DELETE. Instead – simply leave the start / end date and details about hours of operation blank and set the [Status 2020] field to = 'Inactive'.



The screenshot shows the 'Edit' window with a teal header. Below the header, it says 'Select a template to create features'. The main area is titled 'WID Stations 2017 - IDAHO (editable)' and contains five station types with corresponding colored dots: Rampside (blue), Roadside (red), Roving (green), Temporary Roadside (red), and Temporary Rampside (blue). Below these is a 'Source' option with a yellow star icon. At the bottom is a toolbar with icons for selection, deletion, undo, and redo. Three blue arrows point from text boxes to specific parts of the interface: one to the station type selection area, one to the 'delete' button, and one to the 'undo' button.

Select the type of station to add by first selecting a symbol from the edit template

Selecting an already mapped station while in 'edit mode' will open a dialogue box for editing station attributes (see next page for example).

Note the 'delete', 'undo' & 'redo' buttons on the bottom right of the edit tool window. All web edits are transacted on a copy of the official dataset and will be reviewed prior to adoption.

Sample attribute edits - note the format of responses

ALBERTA - Watercraft Inspection Station Planning

ALBERTA Watercraft Inspection Stations (editable)

Location Name: Wainwright

Description: Hwys 14 / 45 (AB/SK border)

Longitude: -110.79490317

Latitude: 52.84362502

GeneralStationType: Roadside

StateName: Alberta

Editor name: Cindy Sawchuk/Rob McLeod

DirectionType: 1

SymbolAngle: 270

Start Date 2019: 5/14/2019

End Date 2019: 9/3/2019

Days Per Week 2019: 7

Hours of Operation 2019: daylight

Days Per Year 2019: 109

Status 2019: Active

Start Date 2020: 5/14/2020

End Date 2020: 9/3/2020

Days per week 2020: 7

Hours of Operation 2020: daylight

Days per year 2020: 109

Status 2020:

Attachments:

None

Add: No file chosen

Edited by PSMFC_GIS 6 hours ago

DRAFT operating hours were carried forward from the prior season's schedule.

Please edit values to reflect your actual plans for the coming season.

In order for new sites to display on the map current year's start date is required (even if only a rough estimate).

- When finished editing information for a location, simply close the attribute window. **All edits will be automatically saved as you go.** There is no distinct 'save' button. Edits will be reflected in near real time on the regional version of the WID Stations and Map notes layers. These and other layers may be toggled on/off using the layer list tool. Thanks for your cooperation! Please email me if you need any help.

Van C. Hare - GIS Manager, Pacific States Marine Fisheries Commission
vhare@psmfc.org