

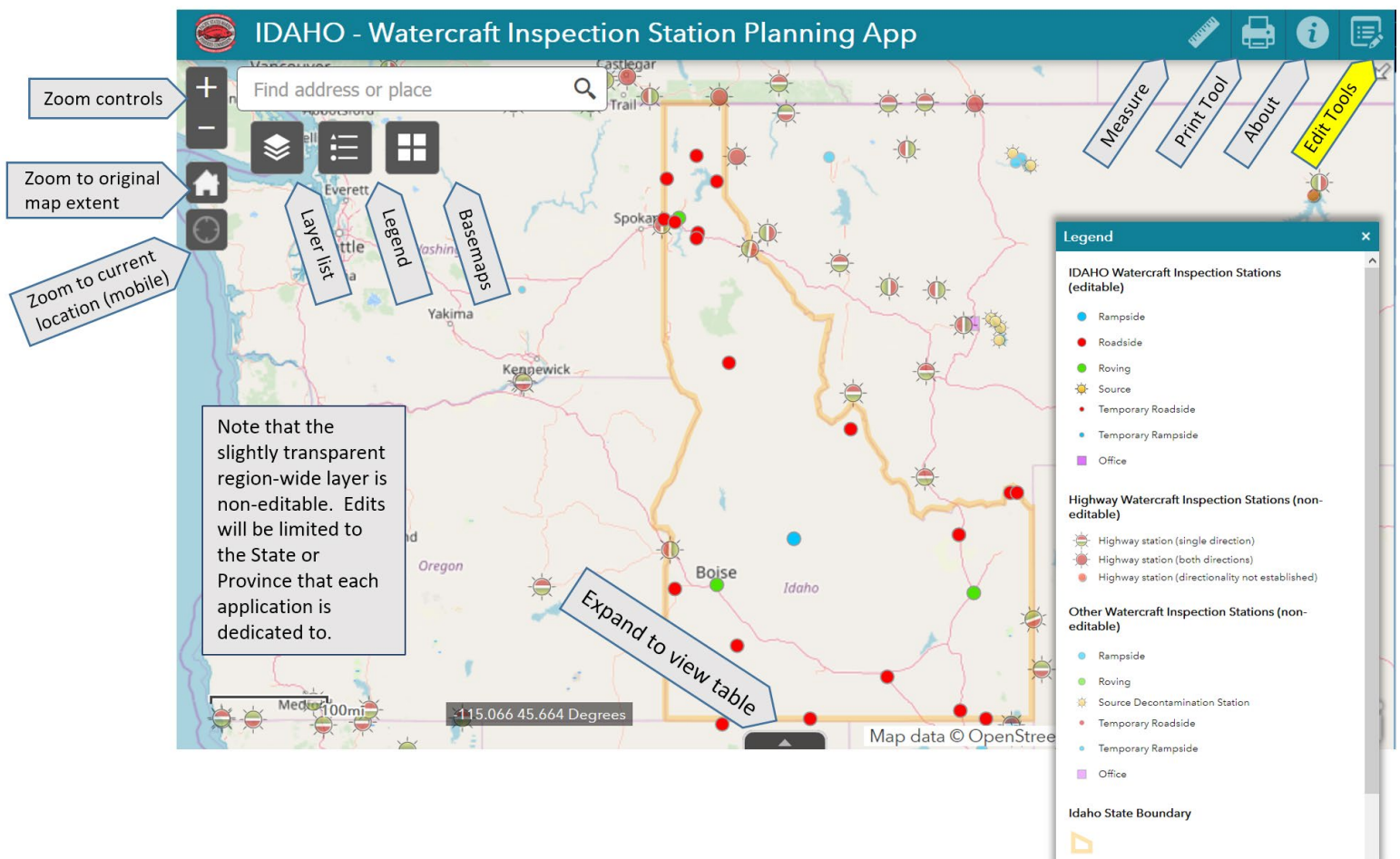
## 2019 Watercraft Inspection & Decontamination (WID) Station Planning App


**Purpose:** Support the regional compilation and review of proposed WID station locations and hours of operation.

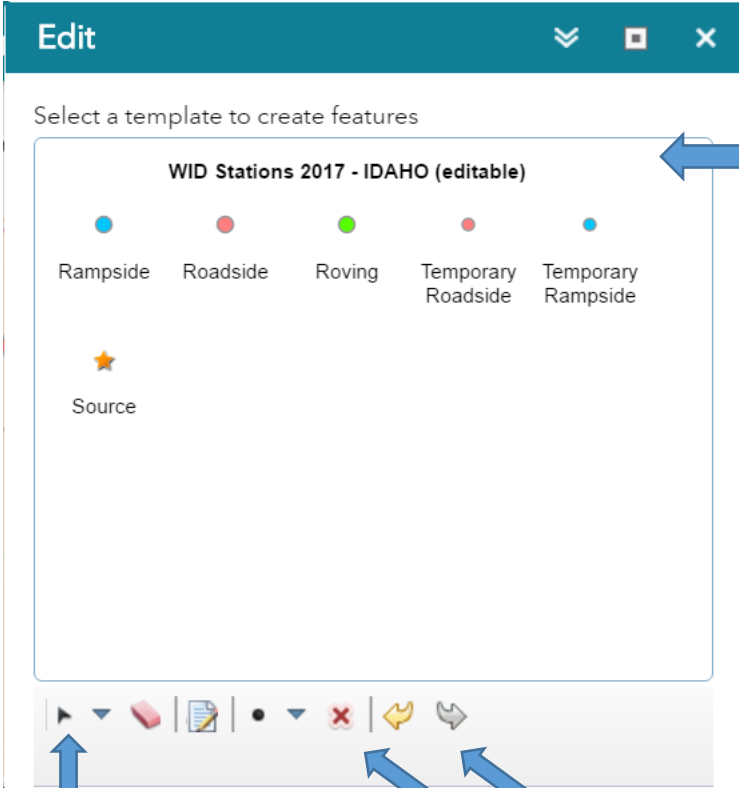
**How:** Each State / Province will have access to a web mapping application dedicated to the jurisdiction. This tool allows AIS Coordinators to confirm and modify information about the WID stations planned for operation in the 2019 season under current funding. Each coordinator can also share summary information on each station's activity during the 2018 season.

### Instructions:

1. Using the State/Province specific link and credentials provided, login to the web mapping application.
2. Explore the map using basic navigation tools. The interface is basic and allows panning, zooming and clicking on features to reveal attributes for mapped locations.



3. Use the Edit tool icon  to begin editing information for each station. When the below window below is displayed, you are in 'edit mode' and can edit attributes for an existing station by selecting it on the map, or add new proposed stations by using the edit template and selecting a station type. If a station that was used in a prior year will not be operational in 2017, please DO NOT DELETE. Instead – simply leave the start / end date and details about hours of operation blank and set the [Status 2019] field to = 'Inactive'.



The screenshot shows the 'Edit' window with a teal header. Below the header, it says 'Select a template to create features'. The main area is titled 'WID Stations 2017 - IDAHO (editable)' and contains five station types with corresponding colored dots: Rampside (blue), Roadside (red), Roving (green), Temporary Roadside (red), and Temporary Rampside (blue). Below these is a 'Source' option with a star icon. At the bottom is a toolbar with various icons including a selection tool, a delete button (red X), an undo button (yellow arrow), and a redo button (grey arrow). Three blue arrows point from text boxes to specific parts of the interface: one to the station templates, one to the delete button, and one to the undo/redo buttons.

Select the type of station to add by first selecting a symbol from the edit template

Selecting an already mapped station while in 'edit mode' will open a dialogue box for editing station attributes (see next page for example).

Note the 'delete', 'undo' & 'redo' buttons on the bottom right of the edit tool window. All web edits are transacted on a copy of the official dataset and will be reviewed prior to adoption.

## Sample attribute edits - note the format of responses

**IDAHO - Watercraft Inspection Station Planning App**

Find address or place:  Edit

IDAHO Watercraft Inspection Stations (editable)

Location Name	Hwy 78/51 (Bruneau)
Longitude	-115.83994764
Latitude	42.88000686
GeneralStationType	Roadside
StateName	Idaho
StateAbbr	ID
In Columbia River Basin?	Yes
Editor name	Lloyd Knight / Nic Zurfluh
DirectionType	2
SymbolAngle	0
Start Date 2018	3/1/2018
End Date 2018	9/2/2018
Operating Hours 2018	Daylight Hours
Days Per Week 2018	7
Days Per Year 2018	186
Status 2018	Active/Data Provided
Total Inspections 2018	
Total # Q/Z Interceptions 2018	
Interception Details 2018	
Start Date 2019	3/1/2019
End Date 2019	9/2/2019
Hours of Operation 2019	Daylight Hours
Days Per Week 2019	7
Days Per Year 2019	186
GlobalID	fe685714-4694-4645-9606-5bff73f053f6

**Attachments:**

None

Add:  No file selected.

Edited by PSMFC\_Admin 28 minutes ago

For all fouled boat interceptions at each inspection stations, please provide interception details using the spreadsheet that Lisa DeBruycker has provided via email.

**NOTE:** For AIS Coordinators that use the Colorado Watercraft Inspection survey data system – interception details will be

**DRAFT 2019 operating hours were carried forward from the 2018 schedule.** Please edit values to reflect your actual plans for 2019.

Edit hints and reminders appear when the cursor hovers over a dialogue box

Note there is an option to attach one or more files that will be associated with the location (pdf, jpg, xls, doc...), this would be a good place to attach a station inspection summary or planning report.

- When finished editing information for a location, simply close the attribute window. **All edits will be automatically saved as you go.** There is no distinct 'save' button. Edits will be reflected in near real time on the regional version of the WID Stations and Map notes layers. These and other layers may be toggled on/off using the layer list tool. Thanks for your cooperation! Email me if you need help

Van C. Hare - GIS Manager, Pacific States Marine Fisheries Commission

[vhare@psmfc.org](mailto:vhare@psmfc.org)