

# Pacific Lamprey Fish Habitat Partnership (PLFHP)

A collaboration of Native American tribes, federal, state, municipal and local agencies working to conserve Pacific Lamprey throughout its range in California, Oregon, Washington, Idaho and Alaska.



## Why should we care about Pacific lamprey?

Tribal Culture & Food Source

Yukon River

Food for Numerous Species

Paddy Halpin

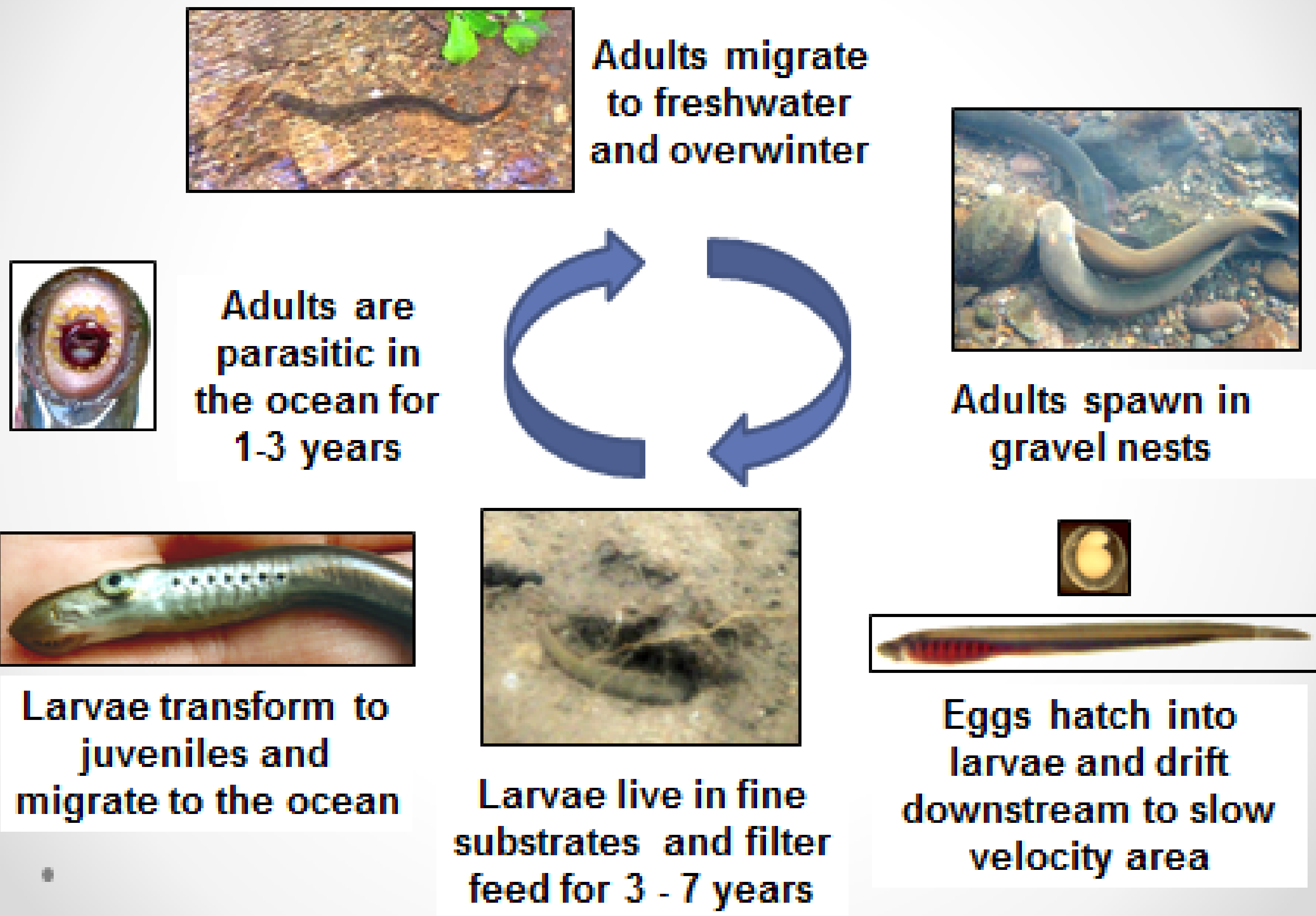
Buffer for Salmon Predation

Janet Jensen / AP

"Farmer of the Underwater"

H. Shirakawa

## Pacific Lamprey Life Cycle

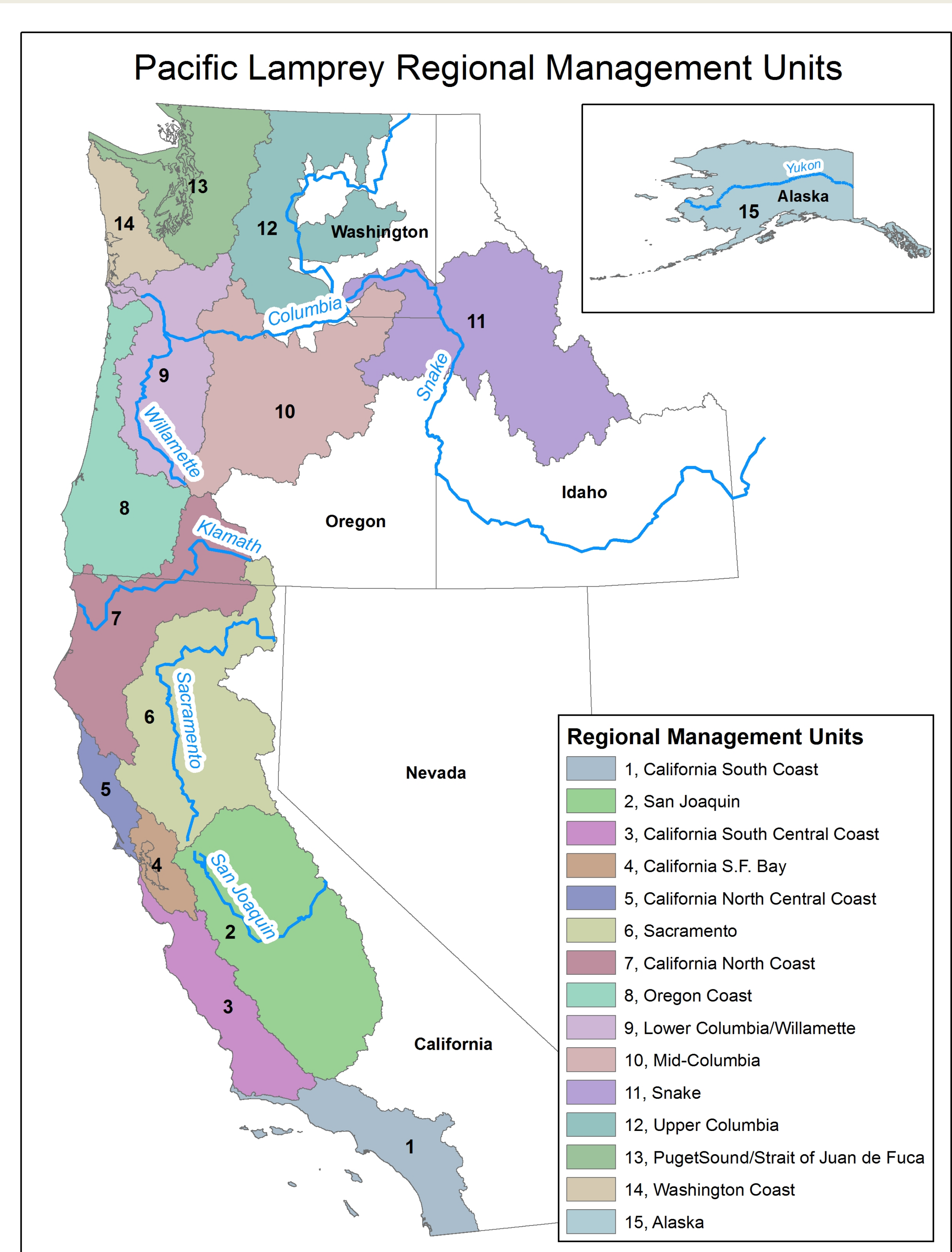


## Pacific Lamprey Partnership

The goal is to achieve long-term persistence of Pacific Lamprey, and support traditional tribal cultural use of Pacific Lamprey throughout their historic range. The partnership will achieve this goal by maintaining viable populations and their habitats in areas where they exist currently, and restoring populations and their habitats where they are at risk of extirpation. The partnership envisions a future where threats to Pacific Lamprey are reduced, and the historic geographic range and ecological role of Pacific Lamprey are restored to the greatest extent possible. The PLFHP efforts are through the 15 Management units identified here:

## Tribal Importance

*“Native American tribes revere Pacific lamprey for cultural, spiritual, ceremonial, medicinal, subsistence and ecological values”*



RESOLUTION #16 – 12

“SUPPORT THE RESTORATION OF PACIFIC LAMPREY AND THE PACIFIC LAMPREY NATIONAL FISH HABITAT PARTNERSHIP”

**CERTIFICATION**

The foregoing resolution was adopted at the 2016 Winter Convention of the Affiliated Tribes of Northwest Indians, held at Suquamish Clearwater Casino Resort, Suquamish, Washington on February 1- 4, 2016, with a quorum present.

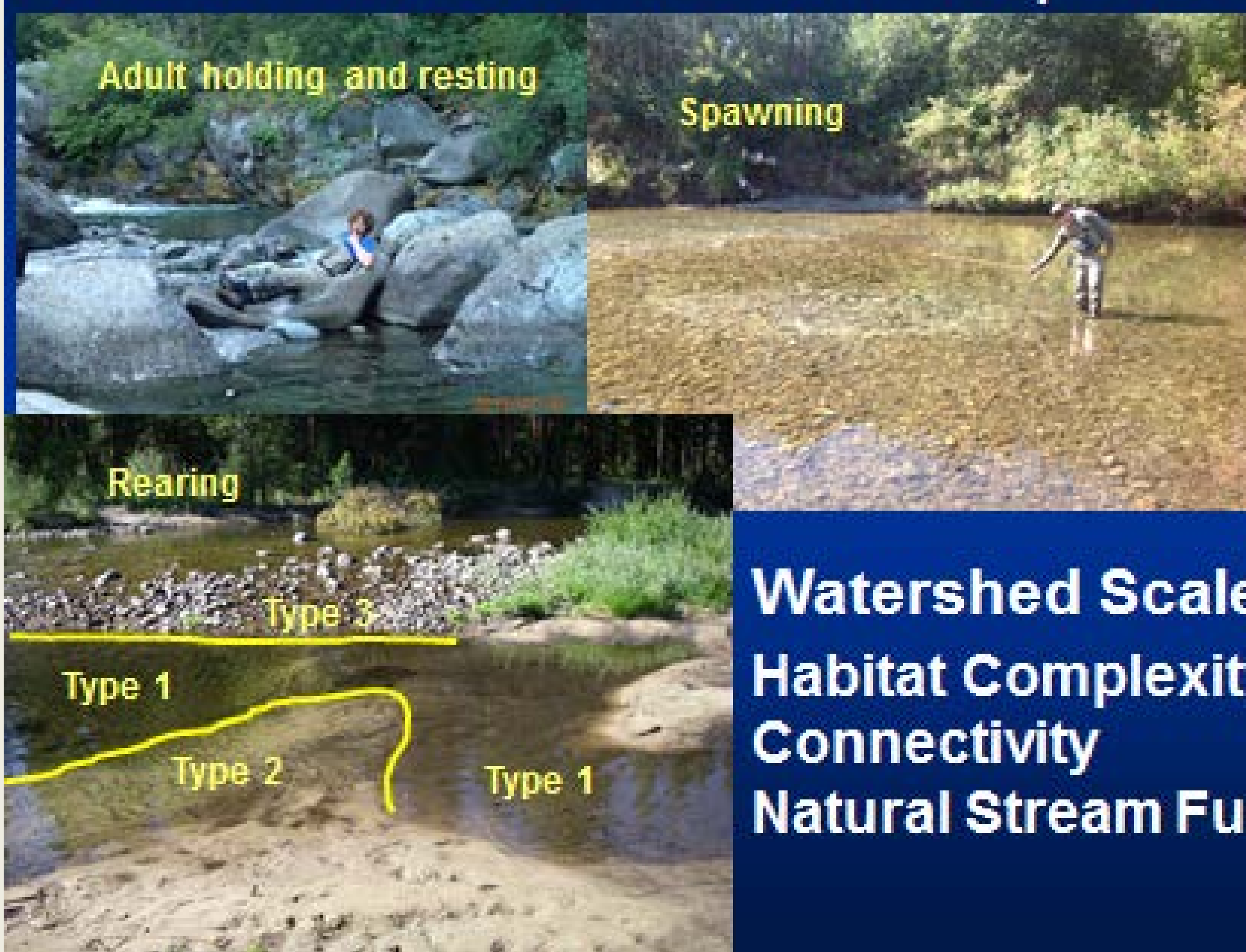
Fawn Sharp, President

Norma Jean Louie, Secretary



# PLFHP Restoration Activities

## Stream Scale Habitat Requirements



**Watershed Scale:**  
Habitat Complexity  
Connectivity  
Natural Stream Function

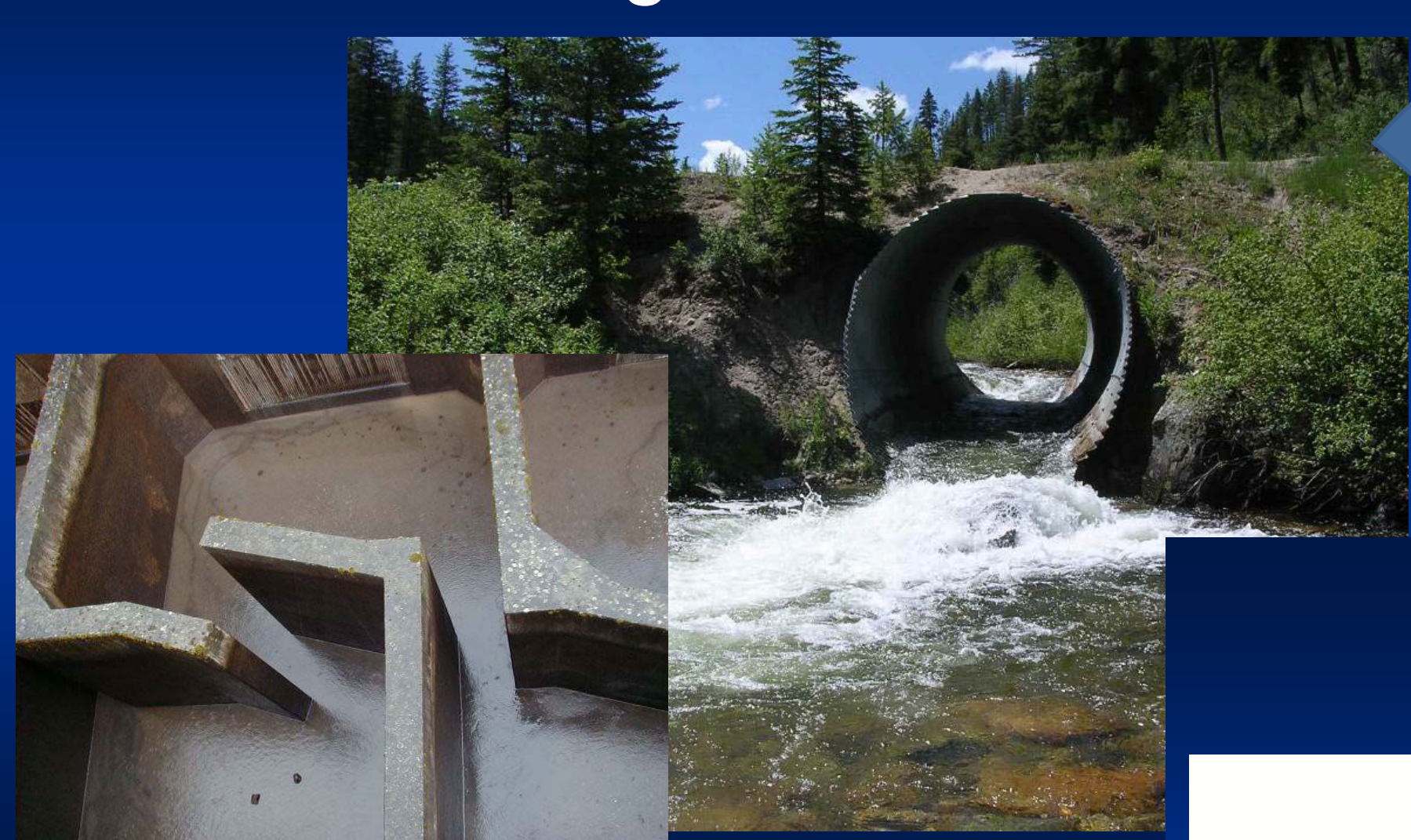
## Current and Historic known Distribution of Pacific Lamprey



**Translocation to extirpated areas**



## Passage Threats



## Passage Improvements

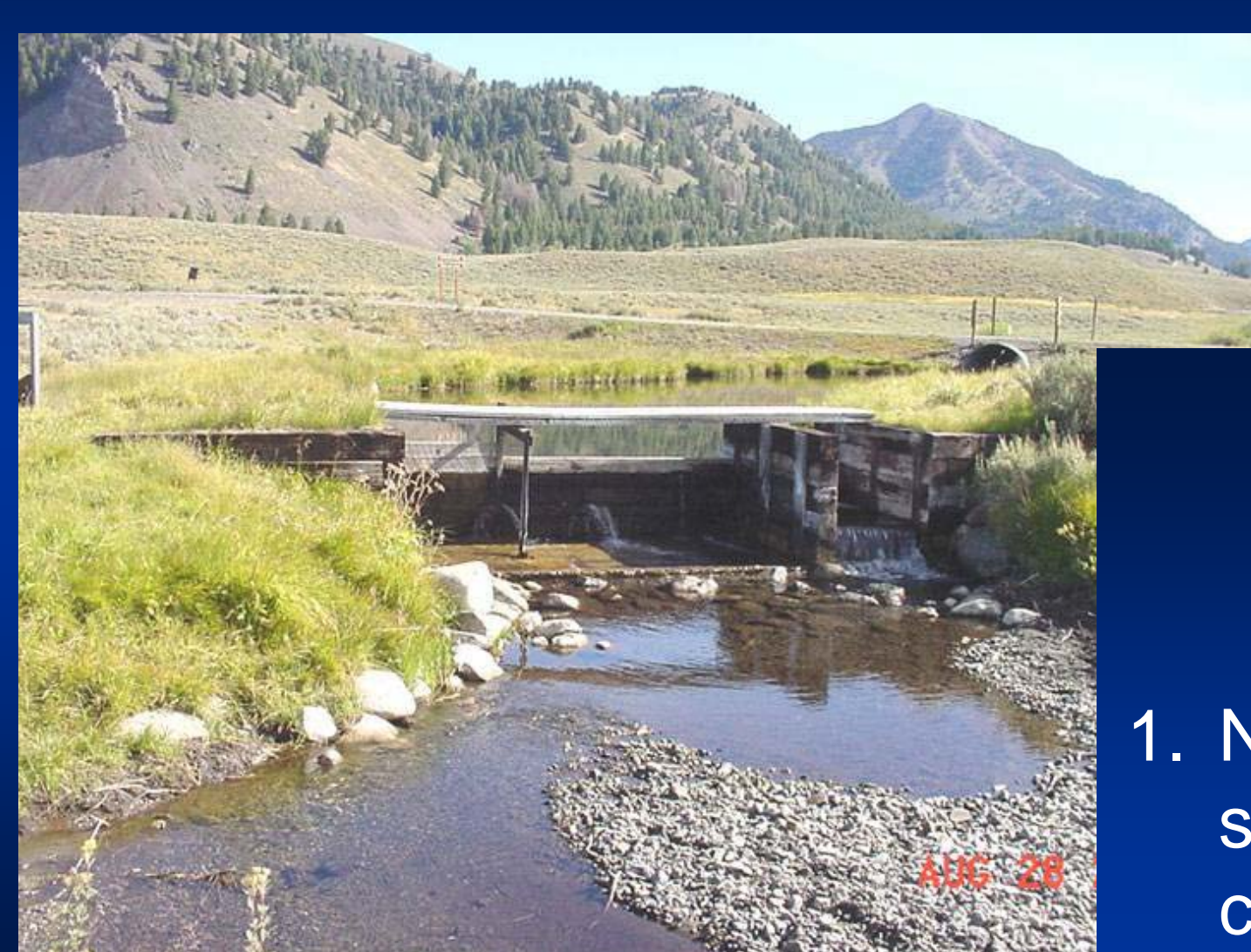


## Dewatering & Streamflow Mgmt



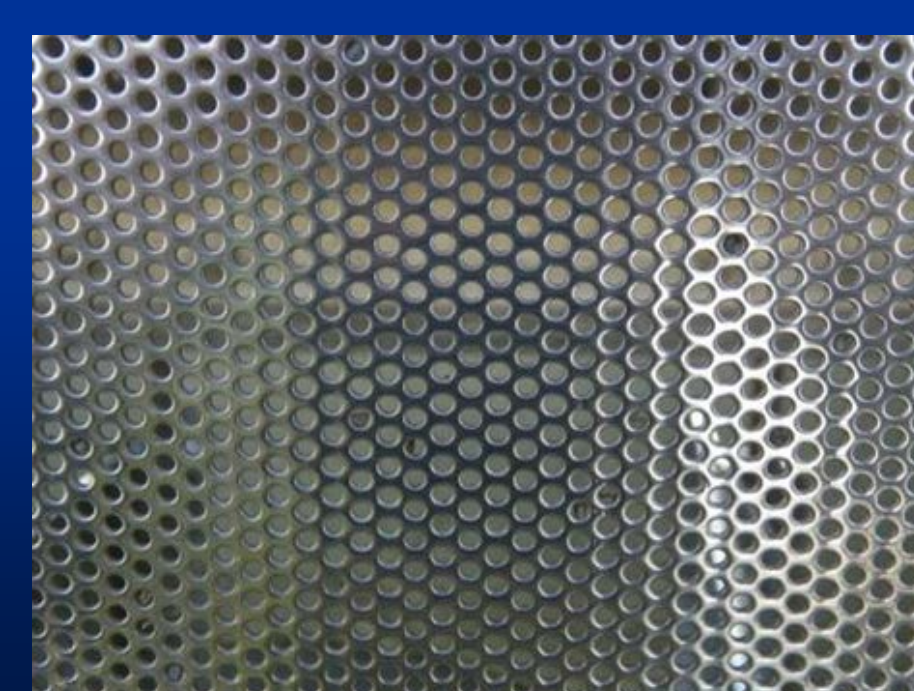
## Salvage

## Entrainment

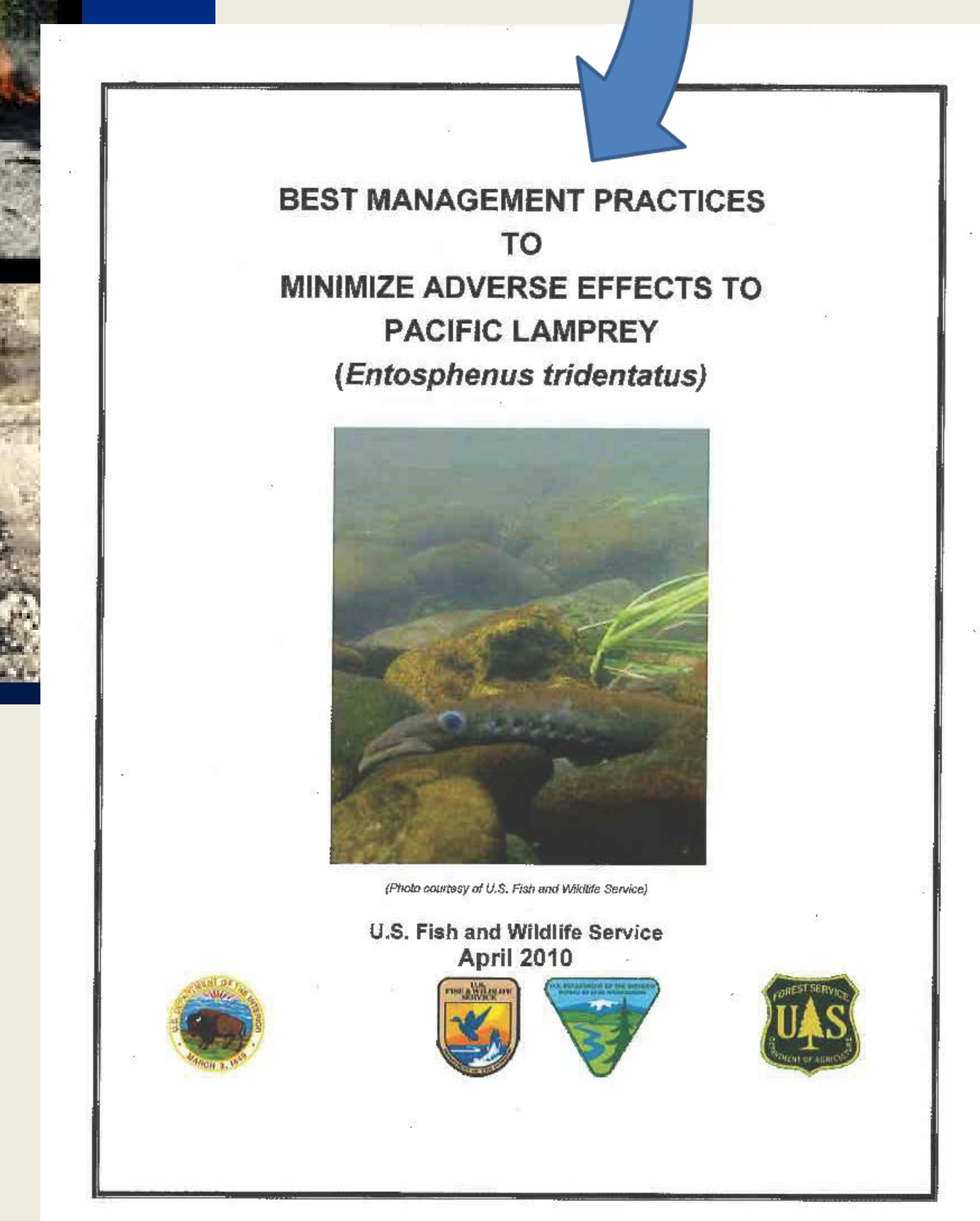


## Entrainment Fixes

1. Negotiate water savings and ditch consolidation
2. Decrease approach velocities
3. Use screens with appropriate material, mesh size and orientation



## Stream Disturbing Activities



## Partners:

Yakama Nation • Umatilla Tribes • Warm Springs Tribes • Nez Perce Tribe • Cow Creek Band of Umpquas • Grand Ronde Tribes • Siletz Tribes • Blue Lake Rancheria Tribe • Mechoopda Tribe • Karuk Tribe • Spokane Tribe • Hoopa Valley Tribe • Columbia River Inter-tribal Fish Commission • Wiyot Tribe • Yurok Tribe • Coos, Lower Umpqua Siuslaw Tribes • California Department of Fish and Wildlife • Oregon Department of Fish and Wildlife • Idaho Department of Fish and Game • Washington Department of Fish and Wildlife • Alaska Department of Fish and Game • U.S. Army Corp of Engineers • Bonneville Power Administration • U.S. Bureau of Indian Affairs • U.S. Bureau of Land Management – CA, ID & OR • U.S. Bureau of Reclamation • U.S. Fish and Wildlife Service – Regions 1, 7 & 8 • U.S. Forest Service – Regions 1, 4, 5, 6 & 10 • National Marine Fisheries Service • Pacific States Marine Fish Commission • U.S. Geological Survey • Lower Columbia River Estuary Partnership • Portland General Electric • Columbia Land Trust • Salmon Creek Watershed Council • California Department of Water Resources • Oregon Department of Environmental Quality • City of Portland Environmental Services • U.S. Environmental Protection Agency – Region 10 • Grant County PUD • Chelan County PUD • Douglas County PUD • Northwest Power & Conservation Council • Portland Metro